

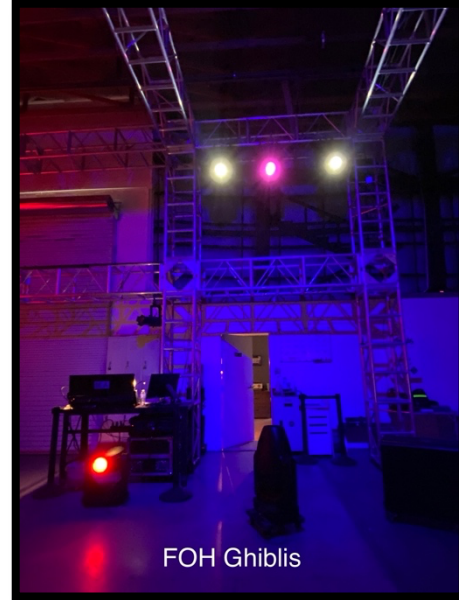
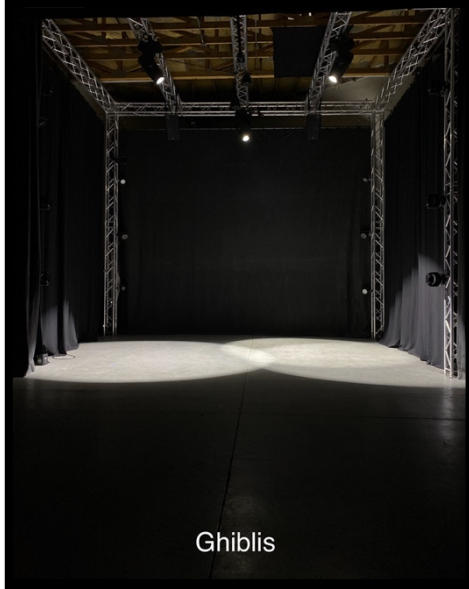


GST Studios: Technical Rider
4301 S Valley View Blvd. STE 23
Las Vegas, Nevada 89103

Lighting:



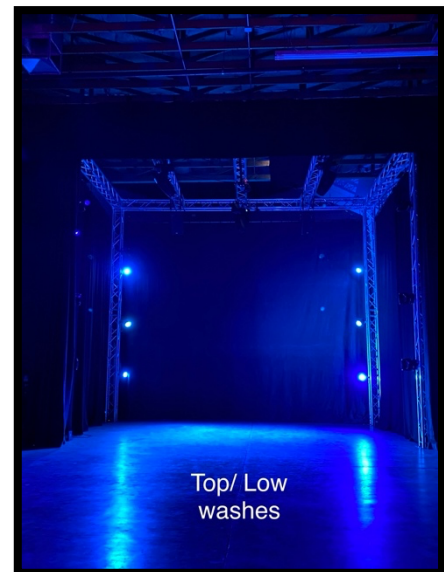
(6) **Ghibli** is Ayrton's first LED spot luminaire that is factory-equipped with a framing system designed to offer lighting designers unlimited creative possibilities without any compromise. Fitted with a LED module using a high-output, low-etendue monochromatic white light source calibrated at 7,500K, Ghibli delivers light output of 23,000



(9) **GST 7 - Par Hex** is a DMX intelligent, LED par fixture. This unit features RGBWY lamps and holds up to 10 channels. Artistically, the 7p is a mid-wash, creating an even light over the studio.



(7) **GST 7- Par Hex** is a DMX intelligent, LED par fixture. This unit features RGBWY lamps and holds up to 10 channels. Artistically, the 7p is a mid-wash, creating an even light over the studio.

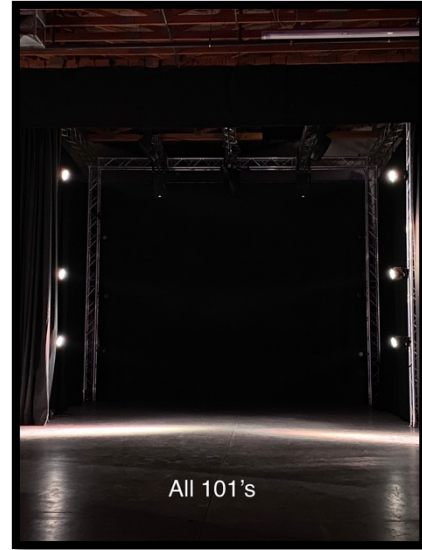




GST Studios: Technical Rider
4301 S Valley View Blvd. STE 23
Las Vegas, Nevada 89103



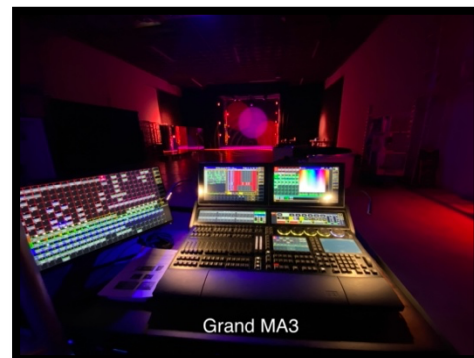
(6) The **MAC 101** is a remarkably small, super light and easy-to-use LED moving head wash light with an amazingly bright beam for such a compact luminaire. It features rapid movement and calibrated colors with a low price tag that allows for revolutionary set, stage and decorative lighting design.



(10) **Freedom Par Hex - 4** is the most colorful model in the next generation of the Par family. It has four 10-watt RGBAW+UV LED's for that extra punch and the special effects that white and UV add to color mixing. The Freedom Par Hex - 4 has a special limiter option for extending battery life so that when you use more than 4 colors you know you'll get a good long show. Fits into any décor and travels safely while charging using the freedom Charger 9 road case.



(1) **GrandMA 3 Light Console** – (1) GrandMA3 Light is a lighting console that is a perfect combination of power and physical size. It has 60 physical playbacks, 16 assignable x-keys and a master playback section. Multi-touch screens provides instant access to programming tools and is fully configurable to suit individual needs. Two letterbox screens for providing feedback and options. It includes 8 192 control parameters. The system size is scalable to 250,000 parameters with additional processing units. Compatible with grandMA2 and grandMA3 software





GST Studios: Technical Rider
 4301 S Valley View Blvd. STE 23
 Las Vegas, Nevada 89103



(2) EPSON Pro L1405U WUXGA 1080p 3LCD Projector – V11H739120 The Pro L1405U large-venue projector combines a laser light source and 3LCD technology for powerful, uncompromising images. Ideal for events staging, auditoriums and sanctuaries, this versatile projector features native WUXGA performance with Epson 4K Enhancement technology. Offering extraordinary color brightness, the Epson 3LCD projector ensures brilliant images. Delivering 8,000 lm of color brightness and 8,000 lm of white brightness, the Pro L1405U's laser light engine also provides many hours of virtually maintenance-free operation.

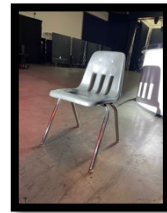
Marley Floor: (4) Rolls
 Length: 68' x Width: 6'7"



Rehearsal Mirrors: (4)
 Hight: 70" x width: 60"
 Sitting on a frame and caster wheels: 10" high

Audio:
 (2) QCS K Series Subs - 1 Kilowatt Active Subwoofer
 (2) QSC K 12 1KW 75° Active Loudspeaker
 (1) Pro FX 12 V2 12-channel Professional Effects Mixer
 (2) Sennheiser ew 100

Chairs: (36) Dark black
 9000 Series Chair: 18" high



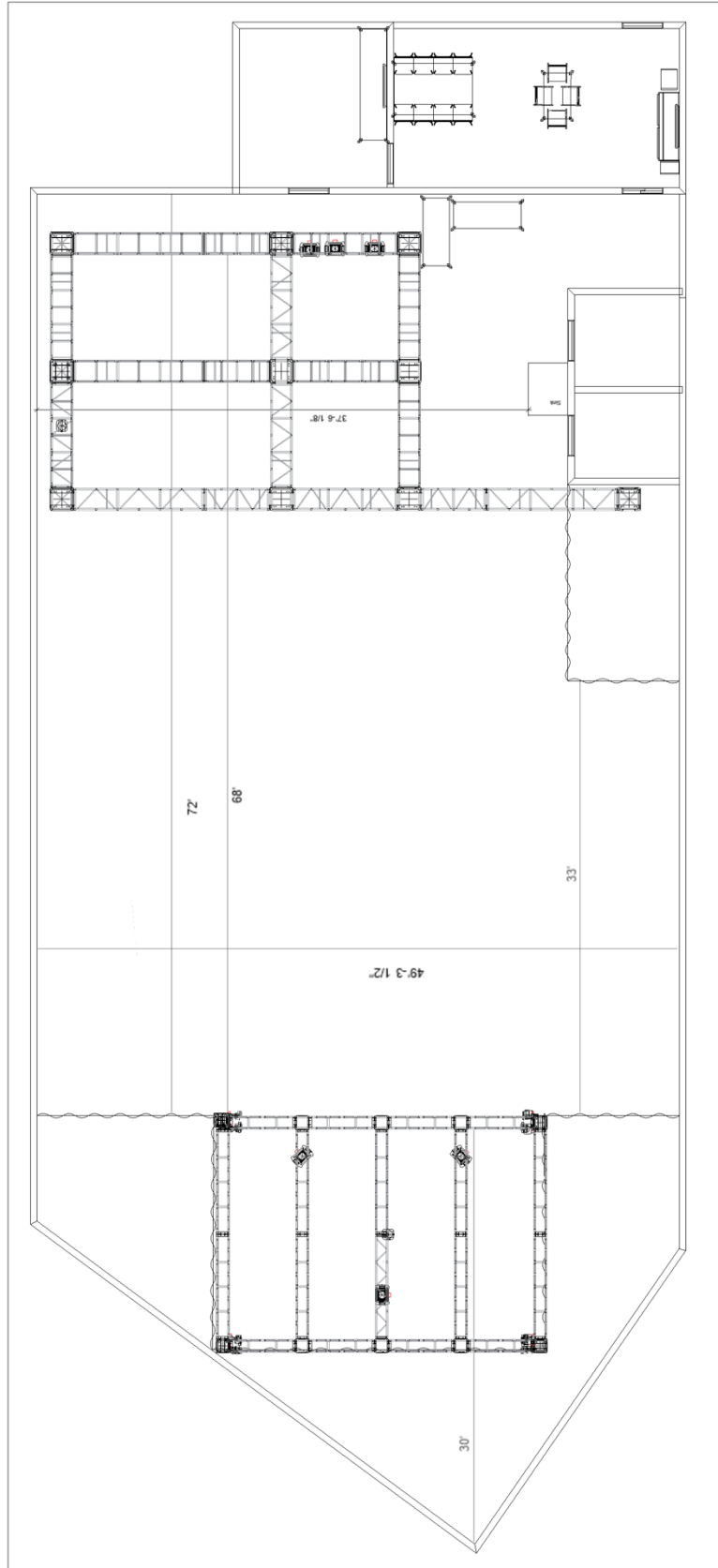
6' Folding table: (4)



Marley:
 To cover the entire area



GST Studios: Technical Rider
4301 S Valley View Blvd. STE 23
Las Vegas, Nevada 89103





GST Studios: Technical Rider
4301 S Valley View Blvd. STE 23
Las Vegas, Nevada 89103

